

V4 boot time adjustment method

Some machine boot time is unstable or too long. This problem can be solved by adjusted cable “A” length.

Point “A” default length was 15cm, capacitance default value of “A” point was 100pF.

The length adjustment range is between 10cm ~ 18cm.

Extra Capacitor 20pF can be added at “A” point. Refer to picture below for detail:

Once adjustment was done, average boot time was **below 30s**.

The following are a few consoles test result in seconds.

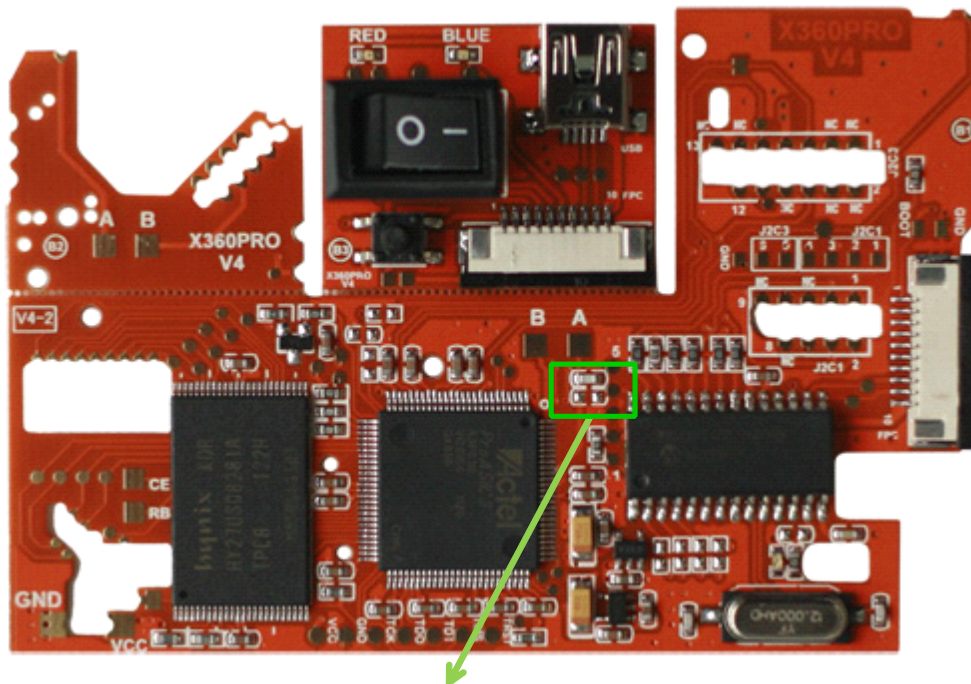
Console 1	seconds								
100pF+22pF	15	10	35	45	50	15	25	10	5
12cm length	NG	15	10	15	10	20			

Console 2	seconds								
100pF	55	10	45	10	20	20	15	30	50
15cm length	15	20	15	10	30	15	55	15	5

Console 2	seconds								
100pF+22pF	20	10	20	50	30	10	60	30	40
13cm length	NG	5	10	35	25	25			

Note: NG is more than 90 sec did not successfully booting custom system.

Figure above for reference only, each consoles boot time will be slightly different.



There is 100pF capacitor solder at point “A”, you can solder a 20pF capacitor at point “A” reserve pad when necessary.